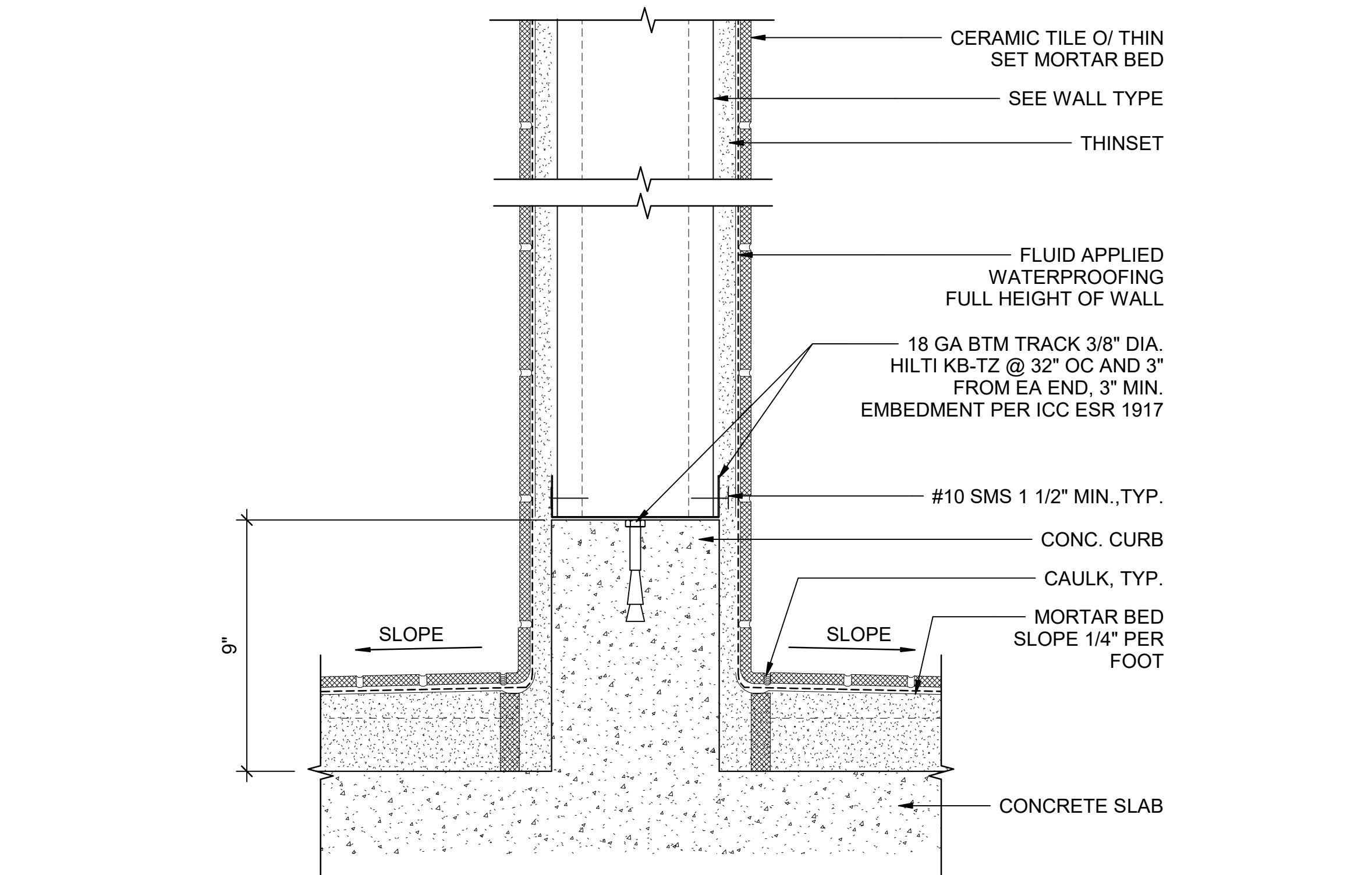
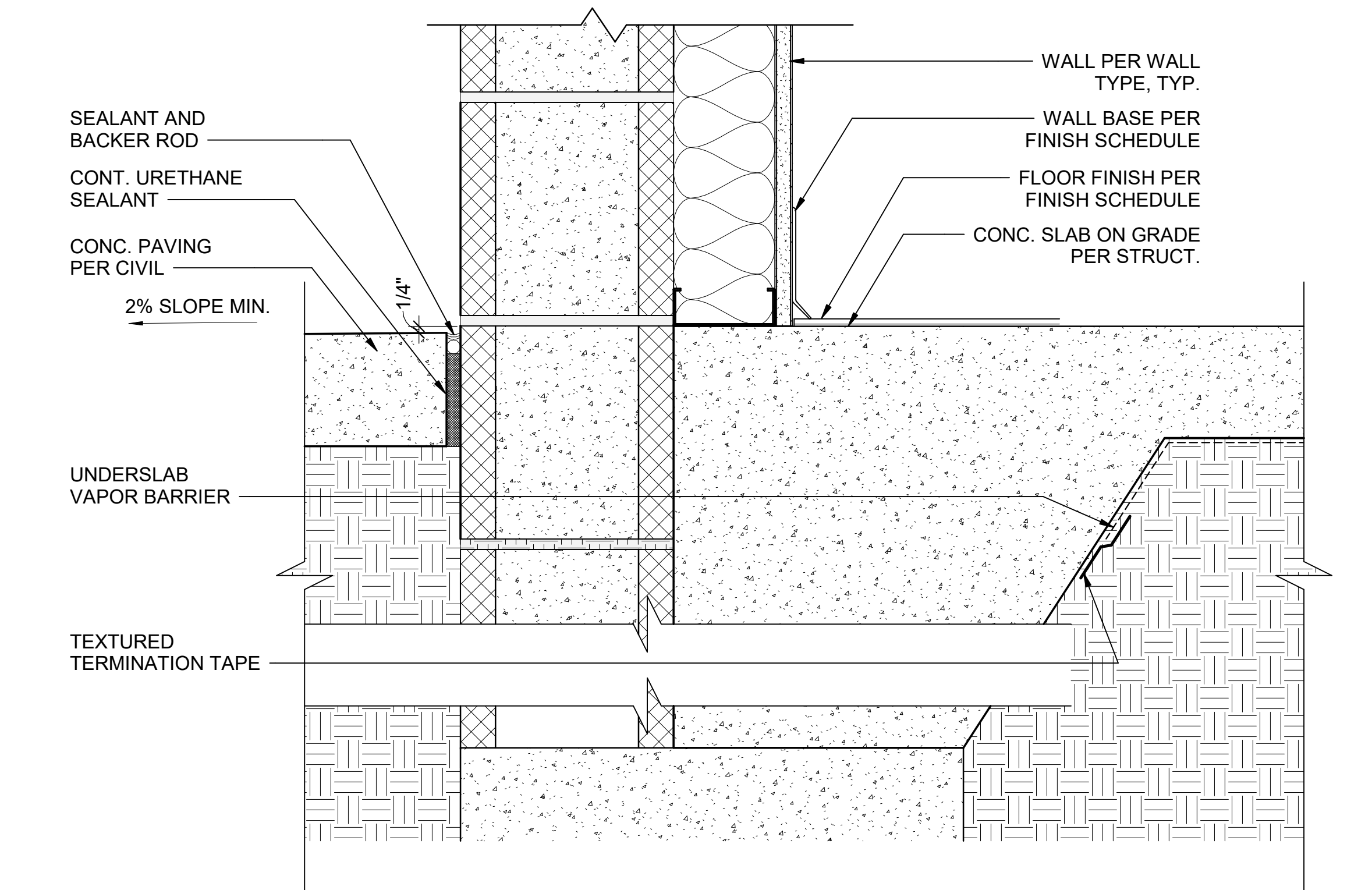


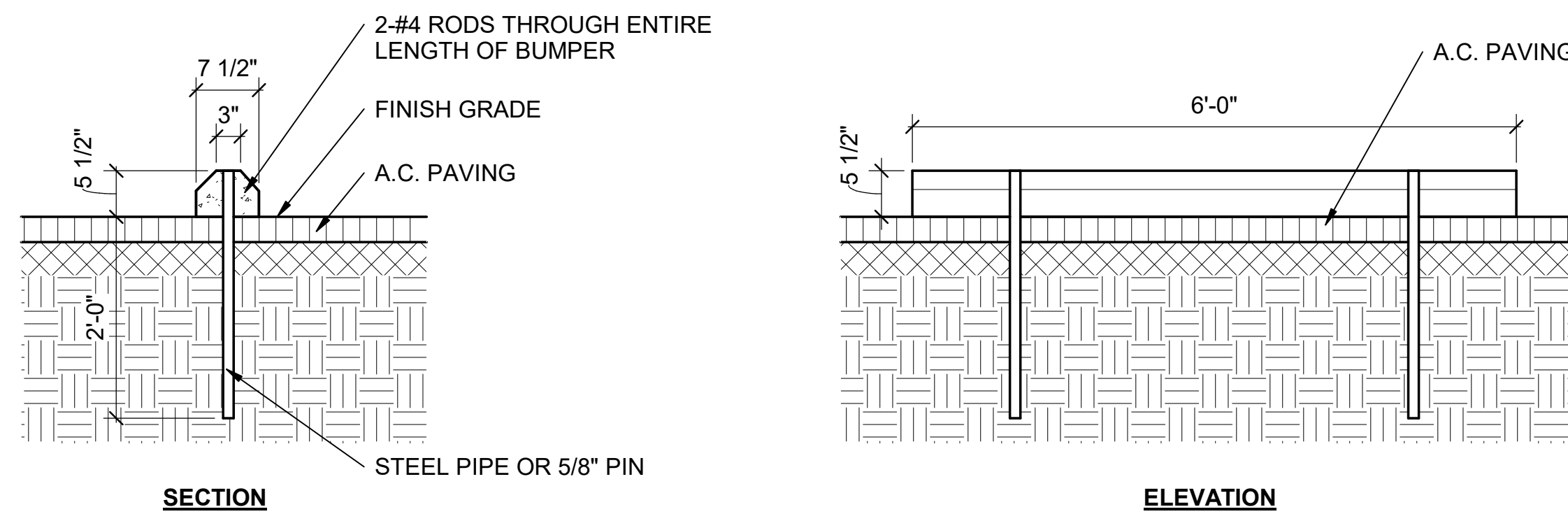
4 QUEUING RAIL DETAIL  
Scale: 1 1/2" = 1'-0"



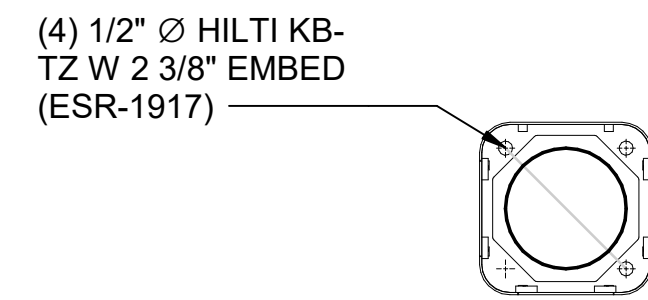
3 CERAMIC TILE WALL  
Scale: 3" = 1'-0"



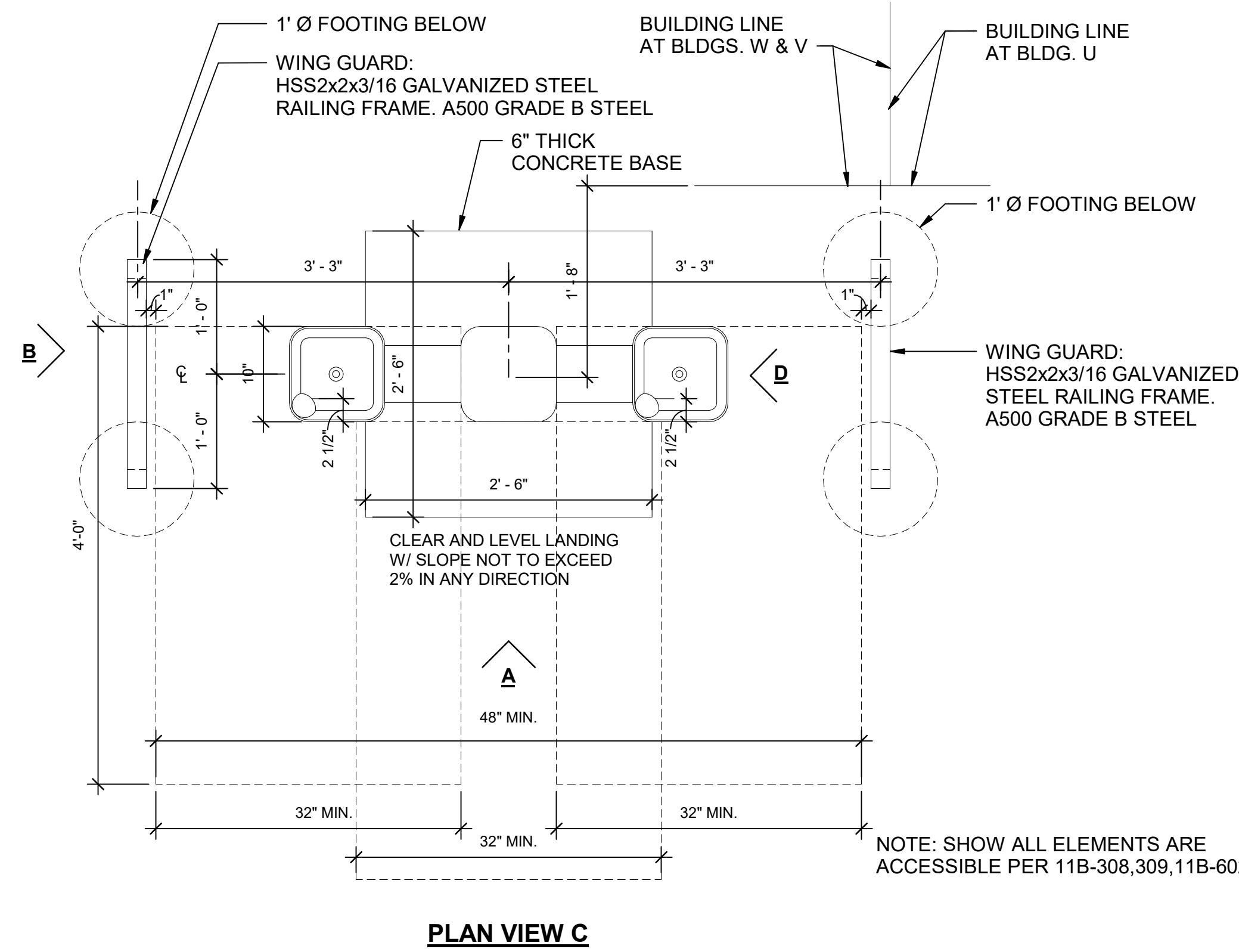
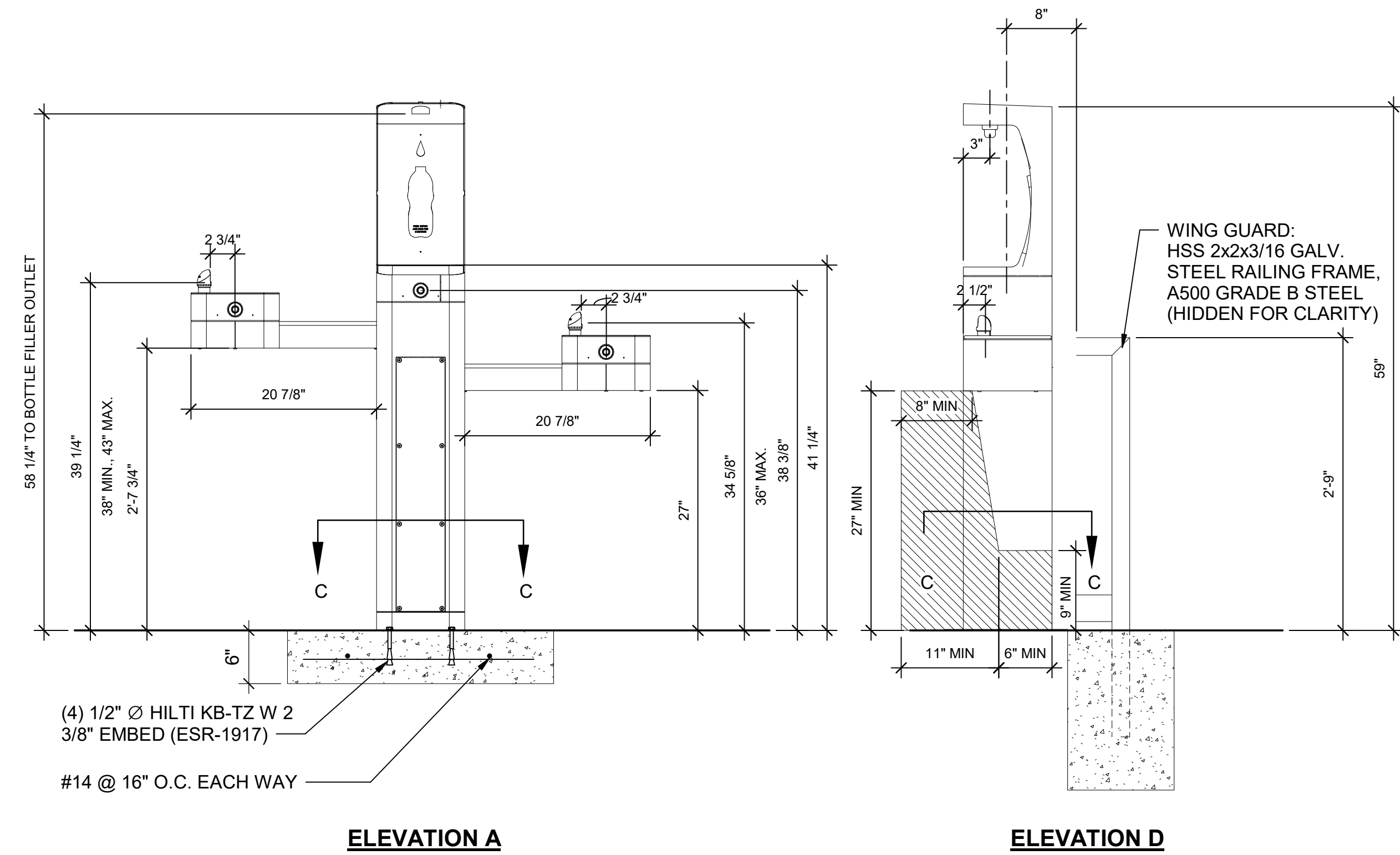
2 EXTERIOR CMU WALL  
Scale: 3" = 1'-0"



5 CONCRETE WHEEL STOP SECTION/PLAN  
Scale: 3/4" = 1'-0"



SECTION C  
INTERNAL PEDESTAL MOUNTING DETAIL

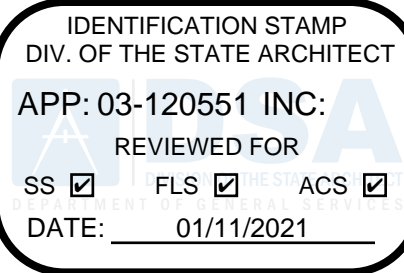


1 WATER FOUNTAIN DETAIL - HAWS MODEL 3612 OR EQUAL  
Scale: 1" = 1'-0"

NOTES

1. A CONCRETE CUTTING SAW SHALL BE USED TO SAWCUT ALL EXISTING PAVEMENT ALONG LINES OF REMOVAL, WHERE NEW PAVEMENT IS TO ADJOIN EXISTING.
2. OVERLAP SEALER COAT A MINIMUM OF 12" BEYOND JOINT LINES, WHERE NEW PAVEMENT ABUTTS EXISTING.
3. ALL SURFACES SHALL PROVIDE POSITIVE DRAINAGE FREE FROM DEPRESSIONS AND SHALL BE FLOODED AS NECESSARY TO VERIFY DRAINAGE CHARACTERISTICS. DUST SHALL BE CONTROLLED BY WATERING.
4. PATCH, REPAIR AND/OR RECONSTRUCT ALL DAMAGED AREAS OF EXISTING PAVING TO MATCH ADJACENT SURFACES.
5. REFER TO ELECTRICAL AND PLUMBING DRAWINGS PRIOR TO EXCAVATING, TRENCHING OR GRADING OPERATIONS. VERIFY LOCATIONS AND DEPTHS OF UTILITIES AND PROTECT THROUGH-OUT THE WORK.
6. SCORE CONCRETE WALKS AND RAMPS AS INDICATED. EQUAL SPACES BETWEEN EXPANSION JOINTS.
7. DOUBLE LINES ACROSS CONCRETE WALKS INDICATE EXPANSION JOINTS AT 20'-0" O.C. MAXIMUM.
8. STRIPPING & LETTERING SHALL BE 2 COATS OF WHITE TRAFFIC PAINT APPLIED IN ACCORDANCE WITH MANUFACTURER'S WRITTEN INSTRUCTIONS. ALL LETTERING TO BE 8" HIGH WITH 1-1/2" WIDE STROKE. ALL STRIPPING 4" WIDE. ALL STRIPPING TO BE APPLIED WITH CUTOUTS & TEMPLATES WITHOUT FUZZINESS OR WAVINESS.

REVISIONS



NORWALK LA MIRADA UNIFIED SCHOOL DISTRICT  
LA MIRADA HIGH SCHOOL NEW FOOTBALL  
STADIUM PROJECT  
13520 ADELEA DRIVE, LA MIRADA, CA 90638

DSA # 03-120551

**NAC**  
ARCHITECTURE

NAC NO. 161-19015  
DATE 12/10/2020

DSA BACKCHECK  
SUBMISSION

EXTERIOR DETAILS

**A5.02**